

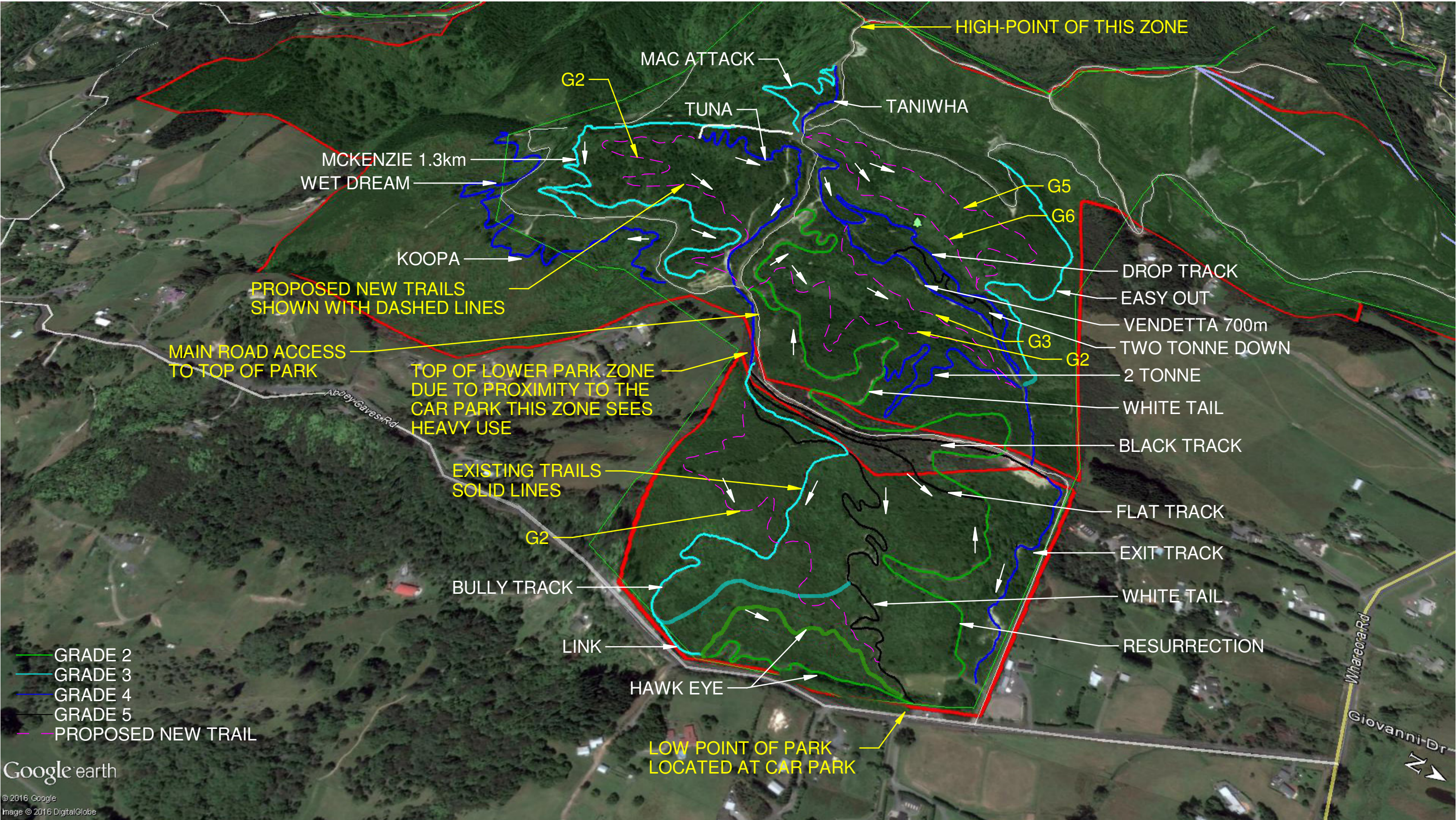


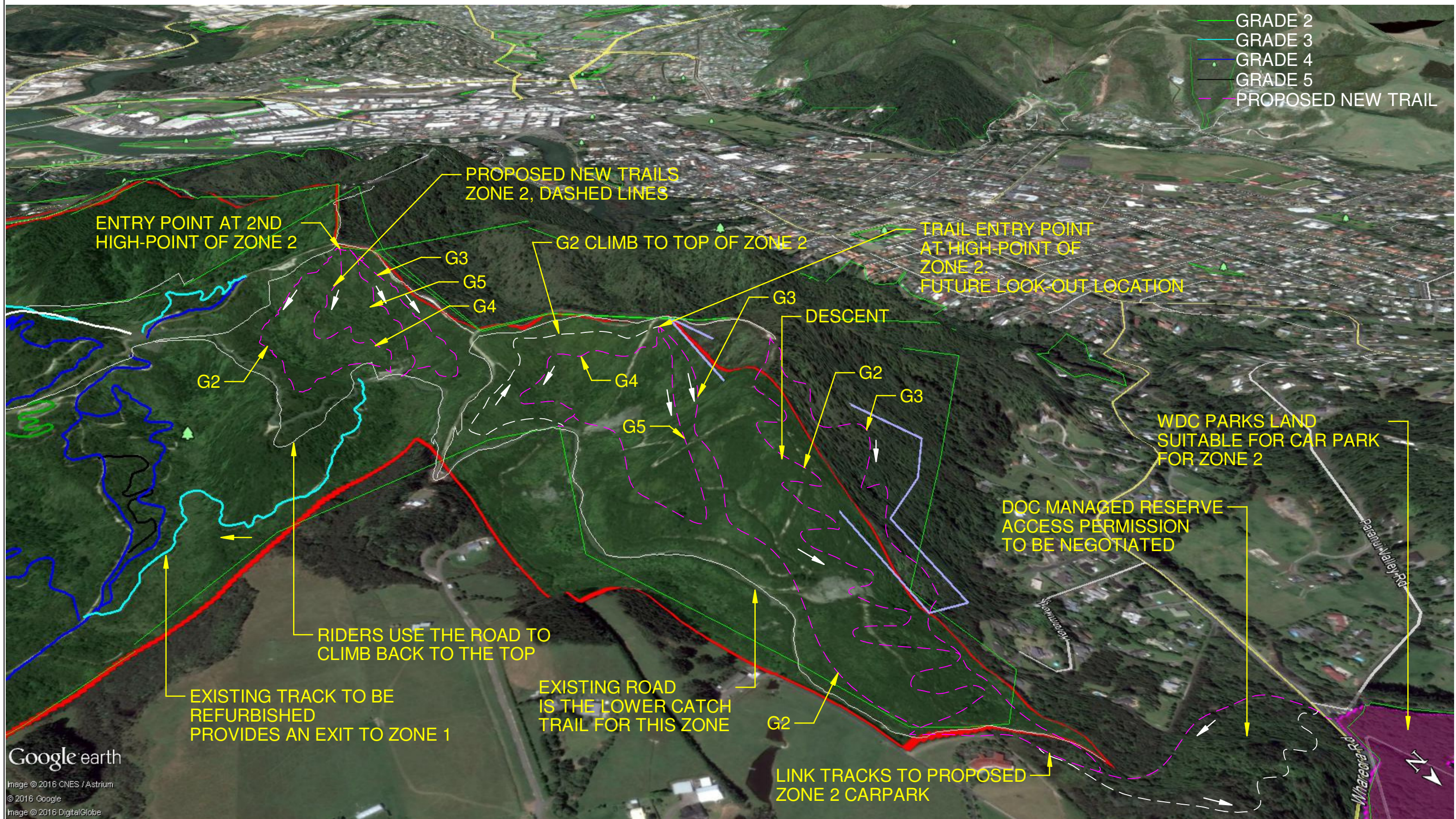


<div></div> <div>SOUTHSTAR TRAILS ROTORUA PH (07) 3456307, 021619954 www.southstartrails.co.nz</div>		REFERENCE DRAWINGS						PROJECT.				DRAWING.				
		DWG No	DESCRIPTION							PARIHAKA MOUNTAIN BIKE PARK & FACILITIES				PROPOSED DEVELOPMENT ZONES		
				B	ISSUED FOR DEVELOPMENT PLAN		JC	19/12/2016								
				A	ISSUED FOR REVIEW		JC	10/10/2016								
				REV	DESCRIPTION		BY	APPD	DATE							
						NAME			INITIAL	SIGN						
				DESIGNED:		J.CARTER	CHECKED:		S.G.							
				DRAWN:		J.CARTER	CHECKED:									
				THIS DRAWING AND THE INTELLECTUAL PROPERTY CONTAINED WITHIN REMAINS THE PROPERTY OF SOUTHSTAR ADVENTURES LTD ©				CAD FILE NAME: C0022 PARIHAKA MTB PARK				<div></div> <div>WHANGAREI DISTRICT COUNCIL</div>				
						SCALE: N.T.S										
						CLIENT				PROJECT No. C0022			DRAWING. L01	REV B		





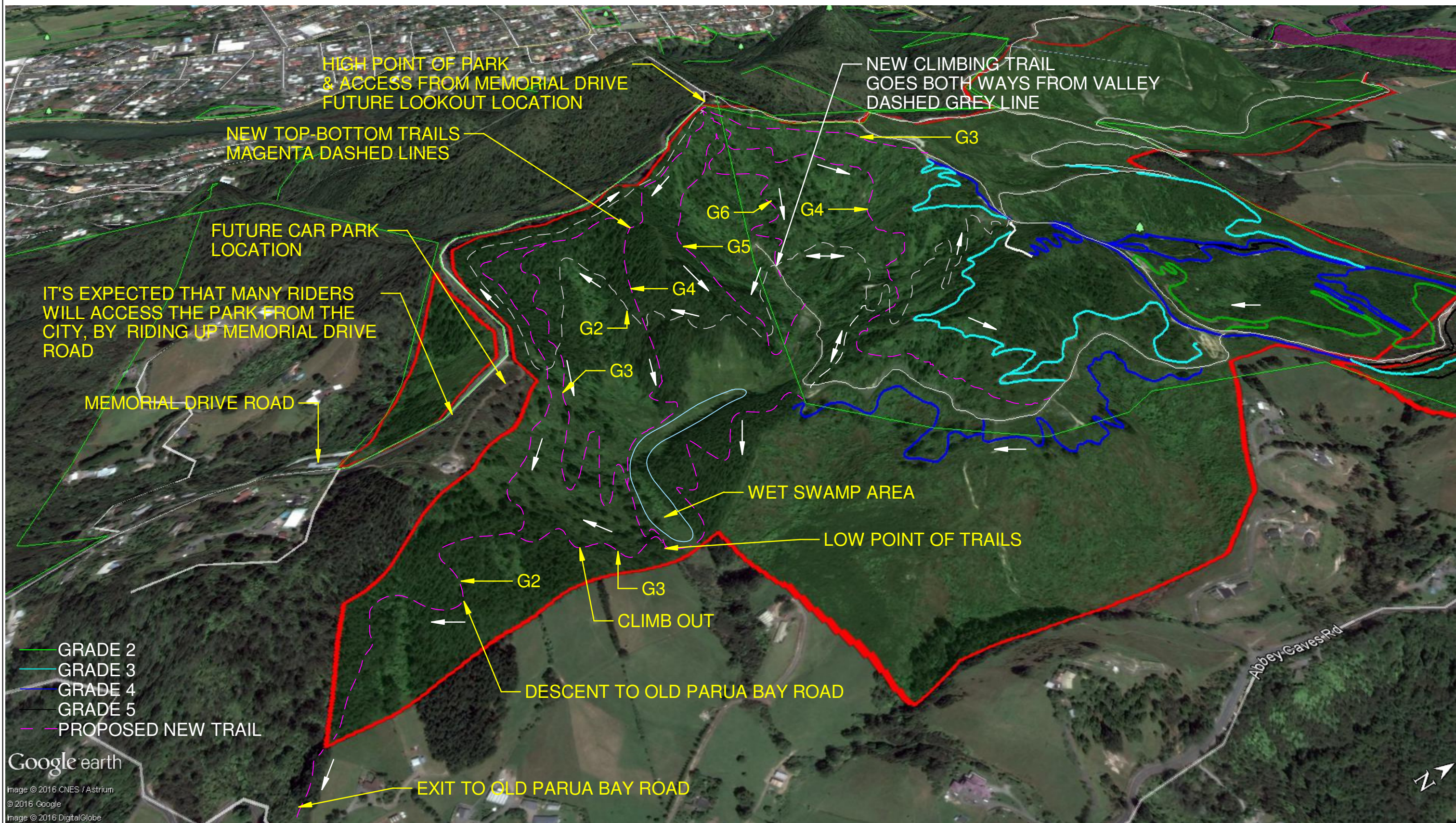
Google earth
© 2016 Google
Image © 2016 DigitalGlobe


<div><div>SOUTHSTAR TRAILS ROTORUA PH (07) 3456307, 021619954 www.southstartrails.co.nz</div></div>	REFERENCE DRAWINGS		PROJECT.				DRAWING.				
	DWG No	DESCRIPTION	B		ISSUED FOR DEVELOPMENT PLAN	JC	19/12/2016	PARIHAKA MOUNTAIN BIKE PARK & FACILITIES			
			A		ISSUED FOR REVIEW	JC	10/10/2016				
			REV	DESCRIPTION		BY	APPD	DATE	<div><div>CLIENT</div><div><div>WHANGAREI DISTRICT COUNCIL</div></div></div>		
				NAME		INITIAL	SIGN				
			DESIGNED:	J.CARTER	CHECKED:	S.G.					
			DRAWN:	J.CARTER	CHECKED:						
	THIS DRAWING AND THE INTELLECTUAL PROPERTY CONTAINED WITHIN REMAINS THE PROPERTY OF SOUTHSTAR ADVENTURES LTD ©		CAD FILE NAME: C0022 PARIHAKA MTB PARK					PROJECT No. C0022			
			SCALE: N.T.S								DRAWING. L02
						REV B					



Google earth
Image © 2016 CNES / Astrium
© 2016 Google
Image © 2016 DigitalGlobe

<div></div> <div>SOUTHSTAR TRAILS ROTORUA PH (07) 3456307, 021619954 www.southstartrails.co.nz</div>		REFERENCE DRAWINGS							PROJECT.		PARIHAKA MOUNTAIN BIKE PARK & FACILITIES		DRAWING. ZONE 2, PROPOSED NEW TRAILS		
		DWG No	DESCRIPTION	B	ISSUED FOR DEVELOPMENT PLAN		JC		19/12/2016						
				A	ISSUED FOR REVIEW		JC		10/10/2016						
				REV	DESCRIPTION		BY	APPD	DATE						
						NAME		INITIAL	SIGN						
				DESIGNED:	J.CARTER	CHECKED:	S.G.								
				DRAWN:	J.CARTER	CHECKED:									
		THIS DRAWING AND THE INTELLECTUAL PROPERTY CONTAINED WITHIN REMAINS THE PROPERTY OF SOUTHSTAR ADVENTURES LTD ©		CAD FILE NAME: C0022 PARIHAKA MTB PARK					<div></div> <div>WHANGAREI DISTRICT COUNCIL</div>		CLIENT				
				SCALE: N.T.S											
											PROJECT No. C0022	DRAWING. L03	REV B		



 SOUTHSTAR TRAILS ROTORUA PH (07) 3456307, 021619954 www.southstartrails.co.nz		REFERENCE DRAWINGS		PROJECT.			DRAWING.		
		DWG No	DESCRIPTION	PARIHAKA MOUNTAIN BIKE PARK & FACILITIES			ZONE 3, PROPOSED NEW TRAILS		
				CLIENT			PROJECT No.		
				WHANGAREI DISTRICT COUNCIL			C0022		
THIS DRAWING AND THE INTELLECTUAL PROPERTY CONTAINED WITHIN REMAINS THE PROPERTY OF SOUTHSTAR ADVENTURES LTD ©				CAD FILE NAME: C0022 PARIHAKA MTB PARK			DRAWING.		
				SCALE: N.T.S			L04		
							REV		
							B		